



# Letter-Go-Round™



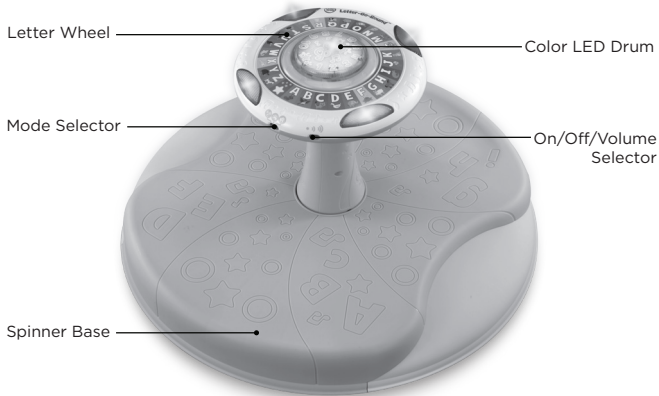
## Instruction Manual

This manual contains important information. Please keep it for future reference.

# INTRODUCTION

Thank you for purchasing the **Letter-Go-Round™**!

Learning colors, counting, letters and animal sounds has never been more fun! Tap the drum to count 1-10 and learn about colors, or spin around the letter wheel to learn about animals from A to Z. Sit, spin, play and learn!



# INCLUDED IN THE PACKAGE

- Letter-Go-Round™
- Quick Start Guide



Electronic panel



Supporting pillar



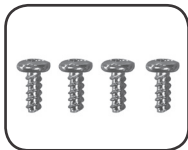
Spinner Base



Panel components A



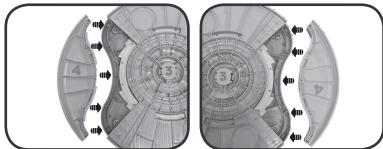
Panel components B



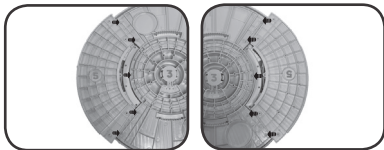
20 screws

## ASSEMBLY

1. Place both Panel Components A to Spinner Base, letter side up.
2. Attach the two Panel Components A to the Spinner Base, using five screws per panel.



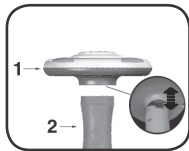
3. Place both Panel Components B next to the Spinner Base, letter side up.



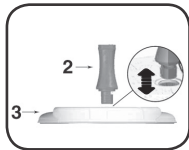
4. Attach the two Panel Components B to the Spinner Base, using five screws per panel.



5. Attach the Supporting Pillar to the Electronic Panel. You will hear a snap when the pieces are properly connected. These pieces cannot be taken apart after assembly.



6. Attach the Supporting Pillar to the Spinner Base. You will hear a snap when the pieces are properly connected. These pieces cannot be taken apart after assembly.



Suitable for children up to Maximum load 55 lb (25 kg).  
Convient aux enfants jusqu'à 25 kg maximum.

## WARNING

All packing materials such as tape, plastic sheets, packaging locks, removable tags, cable ties, cords and packaging screws are not part of this toy, and should be discarded for your child's safety.

## NOTE

Please save this Instruction Manual as it contains important information.

## ATTENTION

Pour la sécurité de votre enfant, débarrassez-vous de tous les produits d'emballage tels que rubans adhésifs, feuilles de plastique, attaches, étiquettes, cordons et vis d'emballage. Ils ne font pas partie du jouet.

## NOTE

Il est conseillé de sauvegarder ce manuel d'instructions car il comporte des informations importantes.

### Unlock the Packaging Locks

- ① Rotate the packaging locks 90 degrees counterclockwise.
- ② Pull out the packaging locks.

### ⚠ CAUTION:

ADULT ASSEMBLY REQUIRED.

This package contains small parts.

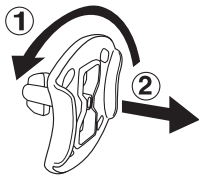
For your child's safety, do not let your child play with the toy until it is fully assembled.

### ⚠ ATTENTION :

CE JOUET DOIT ÊTRE ASSEMBLÉ PAR UN ADULTE.

Ce jouet contient des petits éléments.

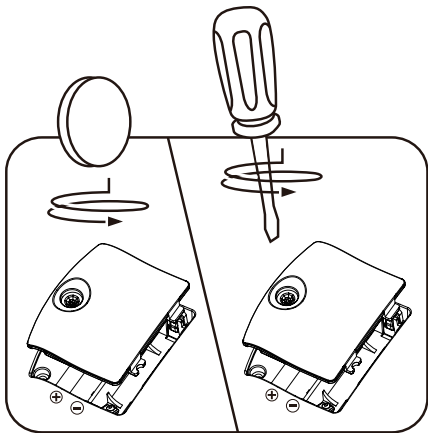
Pour la sécurité de votre enfant, ne pas le laisser jouer avec le jouet tant que ce dernier n'est pas complètement assemblé par un adulte.



# GETTING STARTED

## Battery Removal and Installation

1. Make sure the unit is turned **Off**.
2. Find the battery cover located on the back of the unit, use a screwdriver to loosen the screw and then open the battery cover.
3. Remove old batteries by pulling up on one end of each battery.
4. Install 2 new AA (AM-3/LR6) batteries following the diagram inside the battery box. (For best performance, alkaline batteries or fully charged Ni-MH rechargeable batteries are recommended).
5. Replace the battery cover and tighten the screw to secure.



## IMPORTANT: BATTERY INFORMATION

- Insert batteries with the correct polarity (+ and -).
- Do not mix old and new batteries.
- Do not mix alkaline, standard (carbon-zinc) or rechargeable batteries.
- Only batteries of the same or equivalent type as recommended are to be used.
- Do not short-circuit the supply terminals.
- Remove batteries during long periods of non-use.
- Remove exhausted batteries from the toy.
- Dispose of batteries safely. Do not dispose of batteries in fire.

## RECHARGEABLE BATTERIES:

- Remove rechargeable batteries from the toy before charging.
- Rechargeable batteries are only to be charged under adult supervision.
- Do not charge non-rechargeable batteries.

## NOTE

This product is in Try-Me mode in the packaging. To activate normal play mode, please switch the **On/Off/Volume Selector** to **Off** and then back to **On** to activate normal play mode.



### WARNING:

Adult assembly required for battery installation.

Keep batteries out of reach of children.



### ATTENTION:

Les piles ou accumulateurs doivent être installés par un adulte.

Tenir les piles ou accumulateurs hors de portée des enfants.

# PRODUCT FEATURES

## 1. On/Off/Volume Selector

Slide the **On/Off/Volume Selector** to turn the toy on and select the volume.



## 2. Letter Wheel

Sit on the **Spinner Base** and spin around the **Letter Wheel** while exploring 26 letters and animals.



## 3. Color LED Drum

Tap the light-up color LED **Drum** button to hear learning phrases in different modes.



## 4. Mode Selector

Move the **Mode Selector** to play in Letter mode, Colors & Counting mode, and Animal mode.





# ACTIVITIES

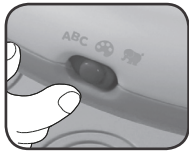
## Letter Mode

Sit on the **Spinner Base** and spin around the **Letter Wheel** and tap the **Drum** to hear letters and letter sounds.



## Colors & Counting Mode

Sit on the **Spinner Base** and spin around the **Letter Wheel** to play a color game and tap the **Drum** to count from 1 to 10.



## Animal Mode

Sit on the **Spinner Base** and spin around the **Letter Wheel** and tap the **Drum** to hear animal names and animal sounds.



## Song Lyrics:

Letter Song

Here we go round the alphabet, alphabet, alphabet.

Here we go round the alphabet from A to Z.

Animal Song

Animals, animals all around

Spin, spin yourself around and around.

Color Song

Red light, green light, give the wheel a spin!

Don't stop, don't stop, spin around again!

Let's go!

## CARE & MAINTENANCE

1. Keep the unit clean by wiping it with a slightly damp cloth.
2. Keep the unit out of direct sunlight and away from any direct heat sources.
3. Remove the batteries if the unit will not be in use for an extended period of time.
4. Do not drop the unit on hard surfaces and do not expose the unit to moisture or water.

## TROUBLESHOOTING

If for some reason the unit stops working or malfunctions, please follow these steps:

1. Please turn the unit **Off**.
2. Interrupt the power supply by removing the batteries.
3. Let the unit stand for a few minutes, then replace the batteries.
4. Turn the unit **On**. The unit should now be ready to play again.
5. If the unit still does not work, install a new set of batteries.

## Environmental phenomena

The unit may malfunction if subjected to radio-frequency interference. It should revert to normal operation when the interference stops. If not, it may become necessary to turn the power **OFF** and back **ON**, or remove and reinstall the batteries. In the unlikely event of an electrostatic discharge, the unit may malfunction and lose memory, requiring the user to reset the device by removing and reinstalling the batteries.

## Impact de l'environnement

Une défaillance de fonctionnement de l'appareil peut survenir s'il est sujet à des interférences avec les fréquences radioélectriques. Le fonctionnement normal de l'appareil devrait reprendre avec l'arrêt des interférences. Si ce n'est pas le cas, il peut s'avérer nécessaire d'éteindre et rallumer l'appareil ou de retirer et réinstaller les piles. Dans l'éventualité peu probable d'une décharge électrostatique, un mauvais fonctionnement et une perte de mémoire de l'appareil peuvent se produire. L'utilisateur doit alors retirer et réinstaller les piles pour réinitialiser l'appareil.

### **IMPORTANT NOTE:**

If the problem persists, please call our **Consumer Services Department** at **1-800-701-5327** in the U.S. and Canada, or email **support@leapfrog.com**. Creating and developing LeapFrog products is accompanied by a responsibility that we take very seriously. We make every effort to ensure the accuracy of the information, which forms the value of our products. However, errors sometimes can occur. It is important for you to know that we stand behind our products and encourage you to contact us with any problems and/or suggestions you might have. A service representative will be happy to help you.

## CAUTION

Changes or modifications not expressly approved by the party responsible for compliance could void the user's authority to operate the equipment.

## NOTE

This equipment has been tested and found to comply with the limits for a Class B digital device, pursuant to Part 15 of the FCC Rules. These limits are designed to provide reasonable protection against harmful interference in a residential installation. This equipment generates, uses and can radiate radio frequency energy and, if not installed and used in accordance with the instructions, may cause harmful interference to radio communications. However, there is no guarantee that interference will not occur in a particular installation. If this equipment does cause harmful interference to radio or television reception, which can be determined by turning the equipment off and on, the user is encouraged to try to correct the interference by one or more of the following measures:

- Reorient or relocate the receiving antenna.
- Increase the separation between the equipment and receiver.
- Connect the equipment into an outlet on a circuit different from that to which the receiver is connected.
- Consult the dealer or an experienced radio/TV technician for help.

## **Supplier's Declaration of Conformity**

47 CFR § 2.1077 Compliance Information

Trade Name:	LeapFrog®
Model:	6143
Product Name:	Letter-Go-Round™
Responsible Party:	LeapFrog Enterprises, Inc.
Address:	2200 Powell Street, Suite 500 Emeryville, CA 94608
Website:	leapfrog.com

THIS DEVICE COMPLIES WITH PART 15 OF THE FCC RULES. OPERATION IS SUBJECT TO THE FOLLOWING TWO CONDITIONS: (1) THIS DEVICE MAY NOT CAUSE HARMFUL INTERFERENCE, AND (2) THIS DEVICE MUST ACCEPT ANY INTERFERENCE RECEIVED, INCLUDING INTERFERENCE THAT MAY CAUSE UNDESIRE OPERATION.



**Visit our website for more  
information about our products,  
downloads, resources and more.**

***leapfrog.com***  
***leapfrog.ca***

**Read our complete warranty policy online at  
*leapfrog.com/legal***

LeapFrog Enterprises, Inc.  
A subsidiary of VTech Holdings Limited.  
TM & © 2021 LeapFrog Enterprises, Inc.  
All rights reserved.

**Printed in China.**

IM-614300-000

Version:0