



4515 East 139th Street  
 Grandview, MO 64030  
 (800) 362-9055  
 Fax (800) 362-1463  
 www.PRIER.com

## C-158/C-258 Series Anti-Siphon Hose Bibb

Application

*With P-002 Integral Vacuum Breaker*



- Commercial
- Anti-Siphon
- Backflow Check Valve



PRIER Anti-Siphon Angle Hose Bibbs are designed for areas that require water service with an anti-siphon backflow check valve connection, but are not subject to freezing temperatures. Typical installations include outdoor connections in mild climates or any indoor installation for residential, commercial, institutional and industrial applications.

Features

- Heavy pattern cast brass construction
- Rough chrome plated body
- Vandalproof lock shield cap on C-258 model
- Diecast aluminum handle or operating key on loose key vandalproof sill faucets
- Stainless steel seat washer screw and handle screw
- Full circle ACME threads on stem assembly with standard 1/4" L size seat washer
- Lock shield cap
- AFG teflon with graphite packing
- P-002 vacuum breaker backflow check valve approved under ASSE 1011 and CSA B64.2

Ordering

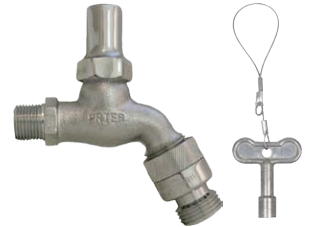


# C-158ST.50

**Operator** ↙  
 1- Handle  
 2- Loose Key

↓  
**Finish**  
 NP- Rough Chrome Plated  
 ST- Satin Nickel Plated  
 with Stuffing Box

↘  
**Inlet Size**  
 50- 1/2" MPT  
 75- 3/4" MPT

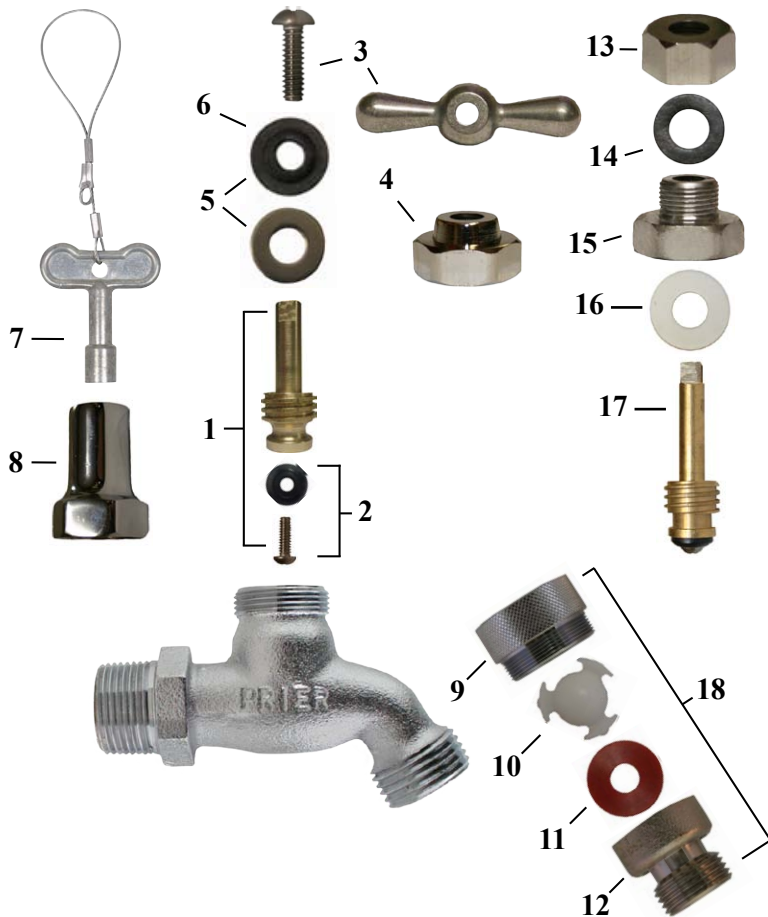




4515 East 139th Street  
 Grandview, MO 64030  
 800-362-9055  
 Fax 800-362-1463

**C-158/258**

## Parts for Anti-Siphon Hose Bibbs



ID	Part No.	Description
1	231-0001	Stem Assembly- Brass Rod
2	C-134KT-802	Seat Washer Kit- 1/4" Bev.
3	C-138KT-801	T-Handle & Screw Kit
4	310-1012	Valve Stem Cap
5	C-134KT-803	Stem Packing Kit
6	390-1001	Packing Only
7	C-108KT-808	Loose Key on Lanyard
8	310-1019	Extended Valve Stem Cap- Polished Chrome Plated
9		Adapter for P-002
10	337-0002	Check Spider- Plastic
11	336-0006	Stepped Washer- Silicone
12	310-0018	Vacuum Breaker Hose Piece
13	310-0006	Stuffing Box for C-158ST
14	393-0001	Packing for C-158ST
15	310-0005	Packing Nut for C-158ST
16	390-0001	Packing Spacer for C-158ST
17	231-0002	Stem Assembly for C-158ST
18	P-002CP	Hose End Vacuum Breaker
	C-434KT-906	Vacuum Breaker Assembly, includes: 9, 10, 11
	C-134KT-804	Loose Key Conversion Kit, includes: 5, 7, 8